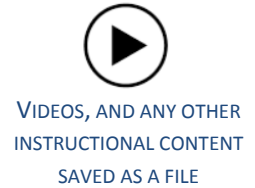
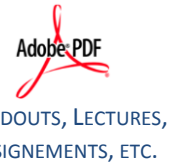
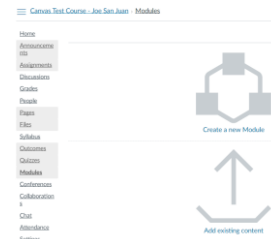


BUILD YOUR COURSE FROM SCRATCH WITHIN CANVAS

1. Since most of your course content is in other applications (not *Canvas*), the first thing is to create and/or fully update and complete your course content accordingly. Ideally, save all your files in one central location on your computer.



2. After all your files are complete and/or updated (including your Syllabus), then [login to Canvas](#) and access your course shell for the upcoming semester:



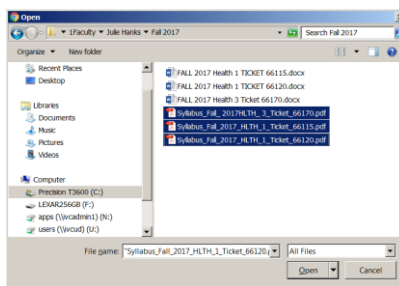
3. On the course navigation menu on the left, select **Files**:



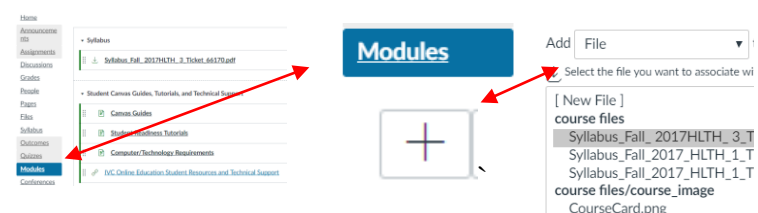
4. Click on the **Upload** button to navigate to and [upload your files for storage in Canvas](#):



(If you have a large number of files that you want to organize in folders, first click on the **+Folder** button to create your folder(s) accordingly. Then you may upload your files into each folder)



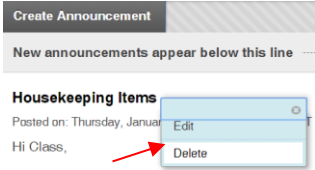
5. Finally, proceed to develop and organize your course content by adding your files within **Modules**:
[Canvas Guide](#) [Video](#)



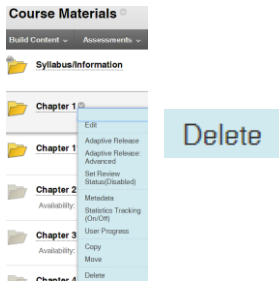
MIGRATE YOUR COURSE FROM BLACKBOARD TO CANVAS (3 PHASES)

PHASE 1 The first phase is the most work up-front, but it will payoff later (with less time and effort) when you migrate your course to *Canvas*. In *Blackboard*, fully update your course by adding, changing, and deleting your course content, thereby insuring that you have a clean version of your course in *Blackboard* for importing into *Canvas*. Some general cleanup tasks to consider are:

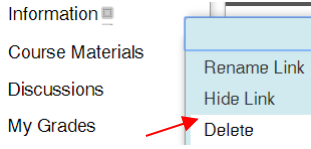
CHANGE/DELETE ANNOUNCEMENTS



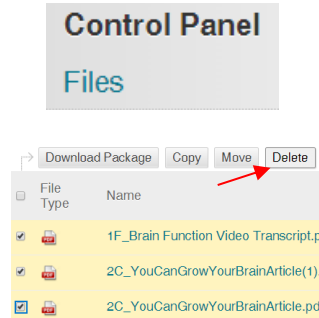
UPDATE/DELETE CONTENT ITEMS



UPDATE COURSE MENU (E.G., DELETE UNUSED BUTTONS)



CLEANUP FILES IN COURSE STORAGE



PHASE 2 Migrate your course to *Canvas* by first exporting it from *Blackboard* and then importing it into *Canvas*. [Here are the instructions.](#)

PHASE 3 After your *Blackboard* course is imported into *Canvas*, you can finally review and organize your course materials. Because of the limitations of the *Canvas* import tool, we recommend you rebuild your course from scratch (see previous page).

Trying to import all of your course material using the Course Import Tool alone will leave some content disorganized and often lost. [Since Blackboard and Canvas are very different learning management systems](#), some things simply will not translate.

Generally, for most faculty in most cases, your content from *Blackboard* will land in *Canvas* inside of **Modules**. Furthermore, you can also check the following areas for the corresponding content from *Blackboard*:

- [Home](#)
- [Announcements](#) ←
- [Assignments](#) ←
- [Discussions](#) ←
- [Grades](#)
- [People](#)
- [Pages](#)
- [Files](#) ←
- [Syllabus](#)
- [Outcomes](#)
- [Quizzes](#) ←
- [Modules](#) ←
- [Conferences](#)
- [Collaboration](#)
- [Chat](#)
- [Attendance](#)
- [Settings](#)

Welcome to Introduction to Sociology
Elizabeth Chambers
Greetings. If you like to watch people and

Student Canvas Guides And Tutorials
This Is A Course Shell That Module Containing Lin

Discussions

Assignments

- Student Learning Outcomes (SLO) Quiz
- SLO Quiz (SOC 1)
Assignments Module
- HW1 Theories Analyzing Media & Pop Culture
Homework Assignments Module | Available until Feb 19 | D

Power Point Lecture Slides

- Introduction SPR 2017.pptx
- RESEARCH 2017.pptx

Assignment Quizzes

- SLO Quiz (SOC 1)
8 Questions
- Student Learning Outcomes (SLO) Q
10 Questions

Files

- A Class Divided Student Worksheet.docx
- A Class Divided Student Worksheet.pdf
- course_image
- Culture 2017.pptx
- DEVIANCE Sum 2017.pptx
- ECONOMY Sum 2017.pptx
- Family Interview Across Generations.docx